

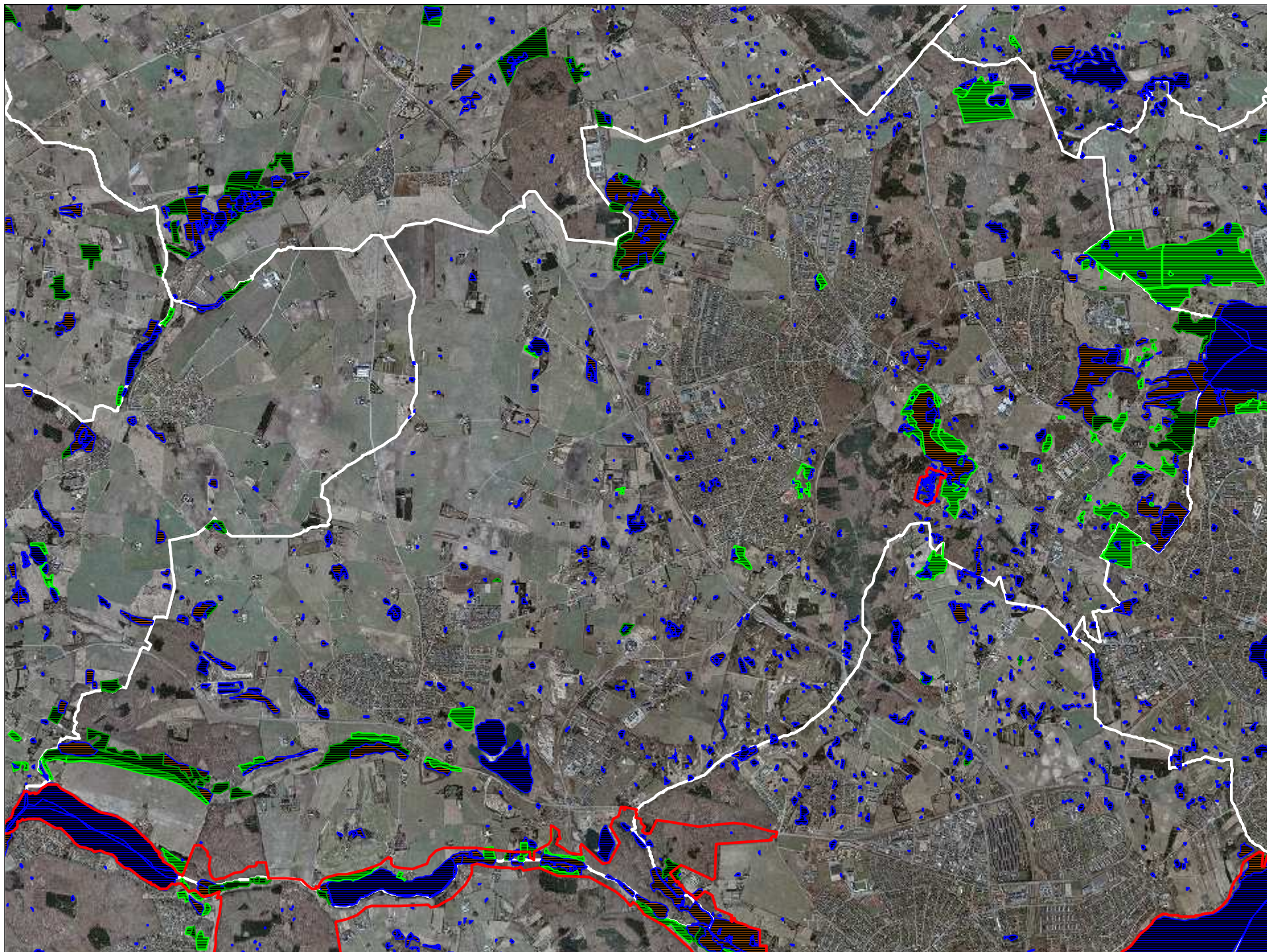
Area:  
**68,5 km<sup>2</sup>**  
**2 km<sup>2</sup> lake area**

**Population:**  
**24100**

**Lakes above 100 m<sup>2</sup>:**  
**456**

**The most important larger  
Lakes:**  
**Sjaelsoe Lake**  
**Bastrup Lake**  
**Bure Lake**





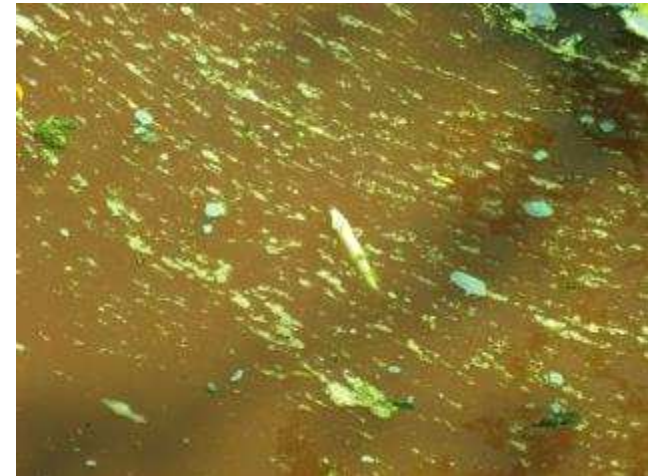




Algae bloom  
Toxic algae  
Lack of oxygen  
Fish death  
Polluted rivers  
WFD posponed



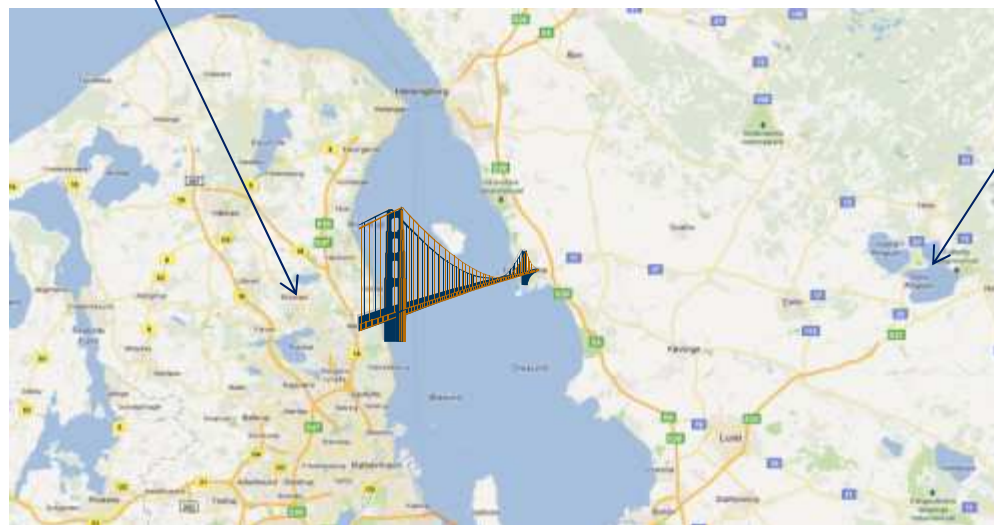
- ✓ The "Fishy" one
- ✓ The "Internal P" one
- ✓ The "External P" one
- ✓ The "Long-lasting" one
- ✓ The "All together" one
- ✓ The "All on board and participation" one

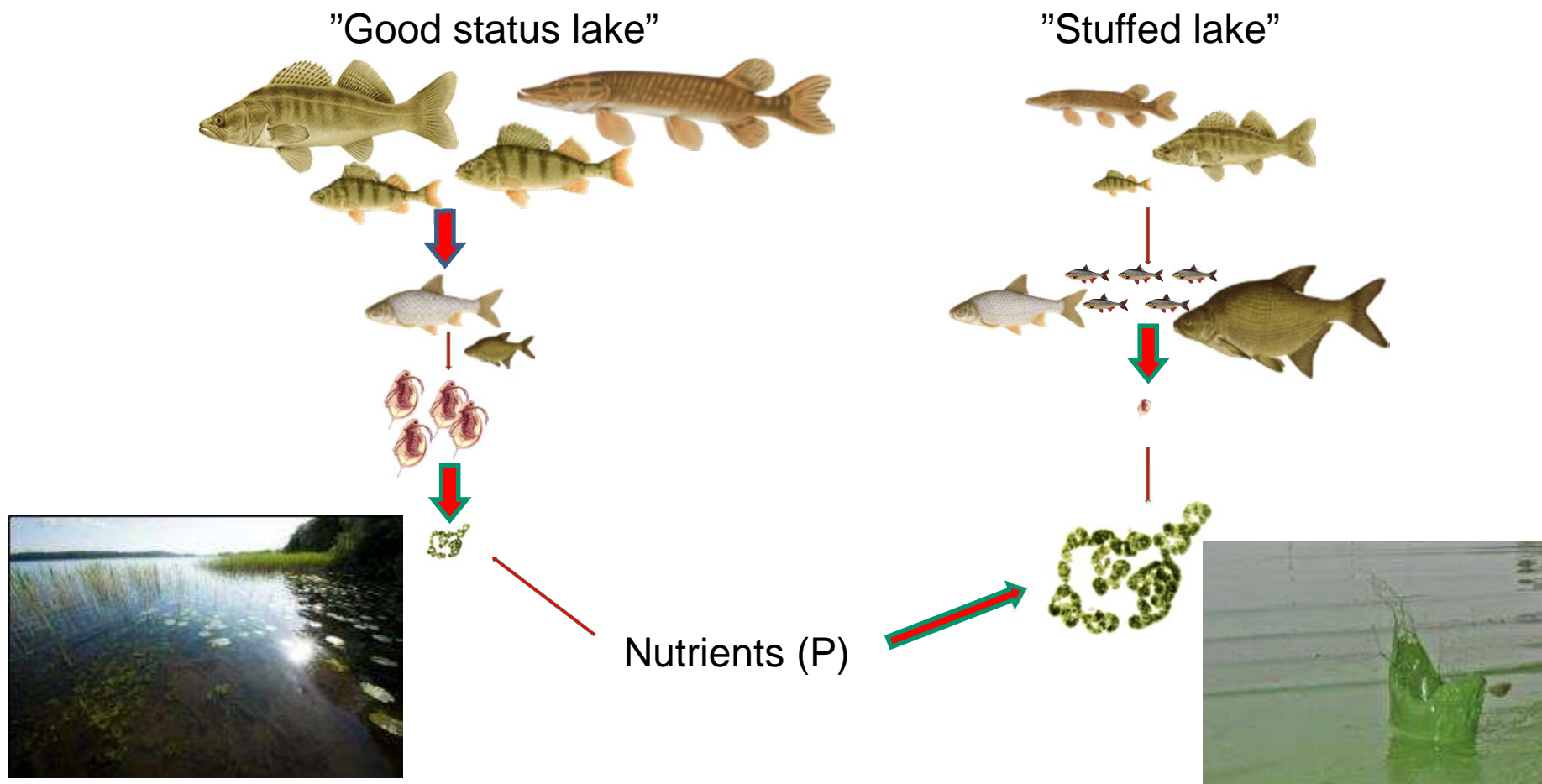




**Sjælsø**

**Ringsjön**

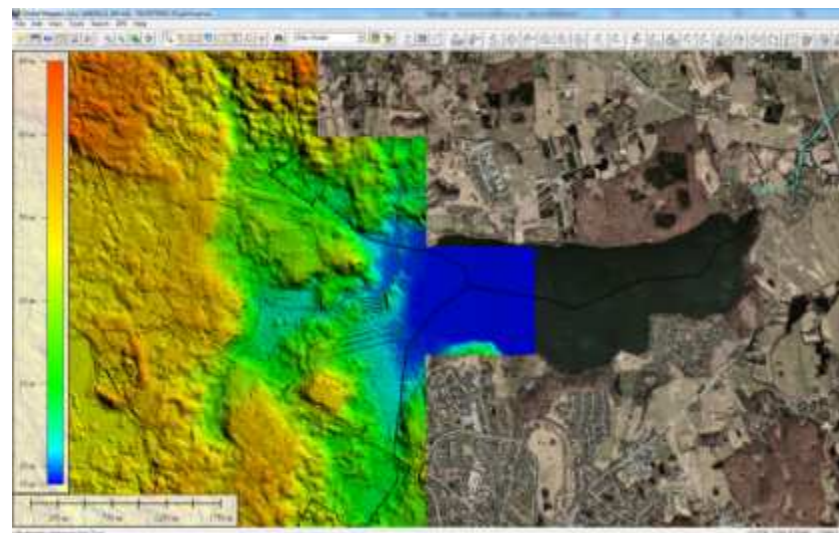








+



**Long term effects!**







✓ Finding spawning sites



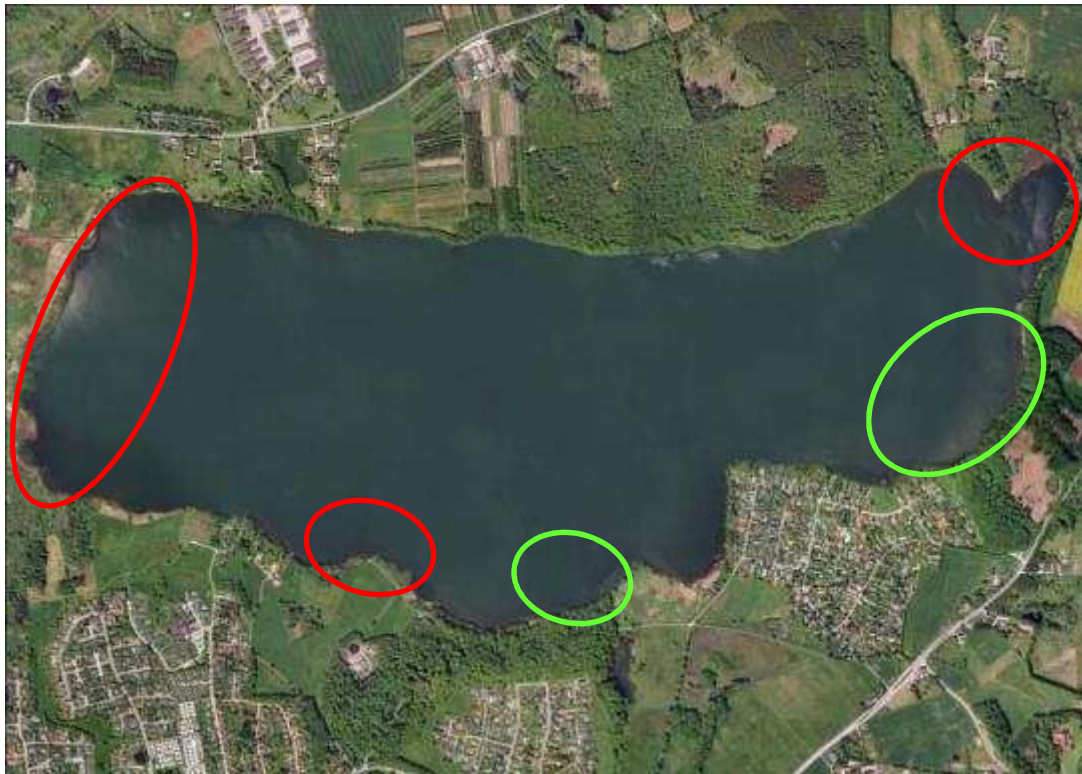
Reduce recruitment +  
Removal of large bream





## Catch the bad guys, keep the good guys fishery efficiency

✓ Finding spawning sites (Gill nets, 85-135 mm)



● Spawning  
● No spawning

- Spawning 20 May
- 120-135 mm best catches
- 233 large bream ( $\approx$  1 ton)
- No by-catches of piscivores

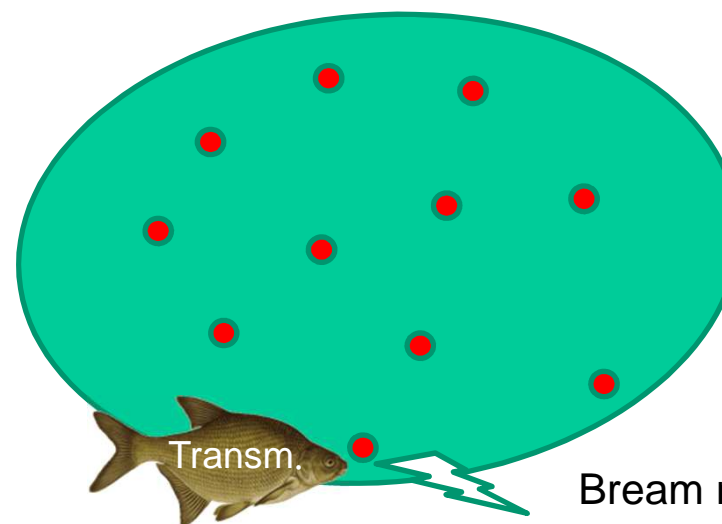


## Catch the bad guys, keep the good guys Telemetrics

- ✓ Tagging of large bream
- ✓ Tracking of large bream during a year
- ✓ Correlate movements and spawning with abiotic factors (temp. air pressure, light etc)



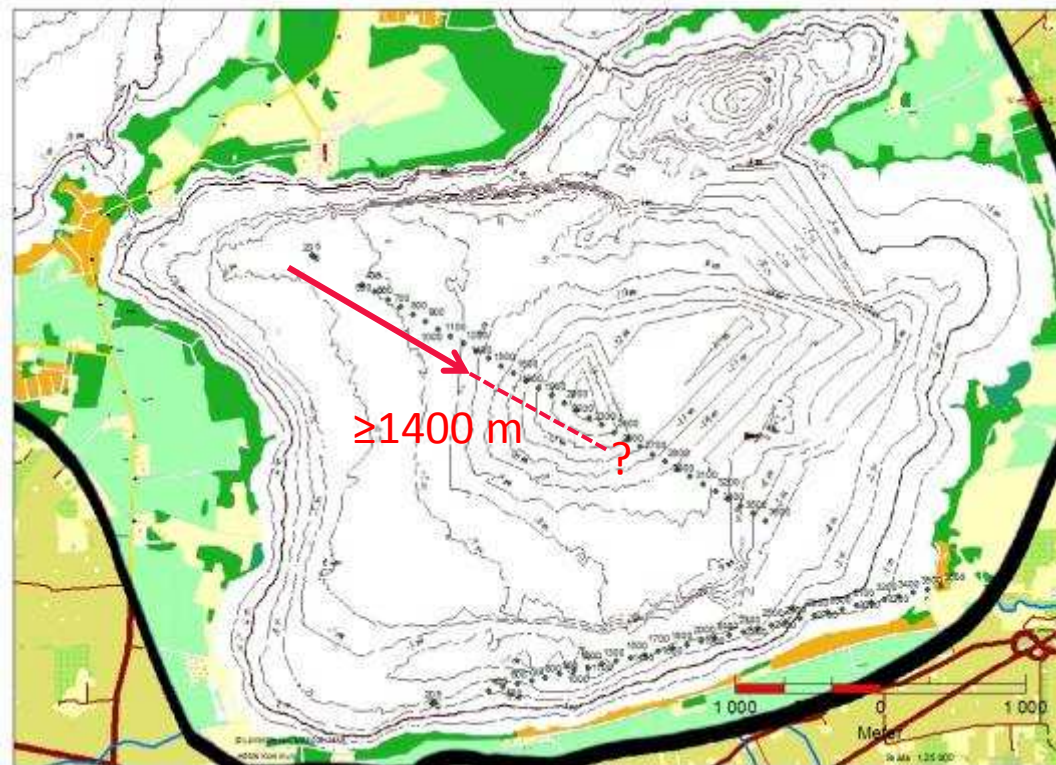
Predictions



Bream no 12  
Passing...  
5 m depth..."catch!"



Concluded first test of transmitter. Large scale test in Ringsjön in 2013





Do Large zooplankton feed on the toxic algae in Lake Ringsjön?  
(yes they did...and were even able to control them)





## External pollution Knowledge of today

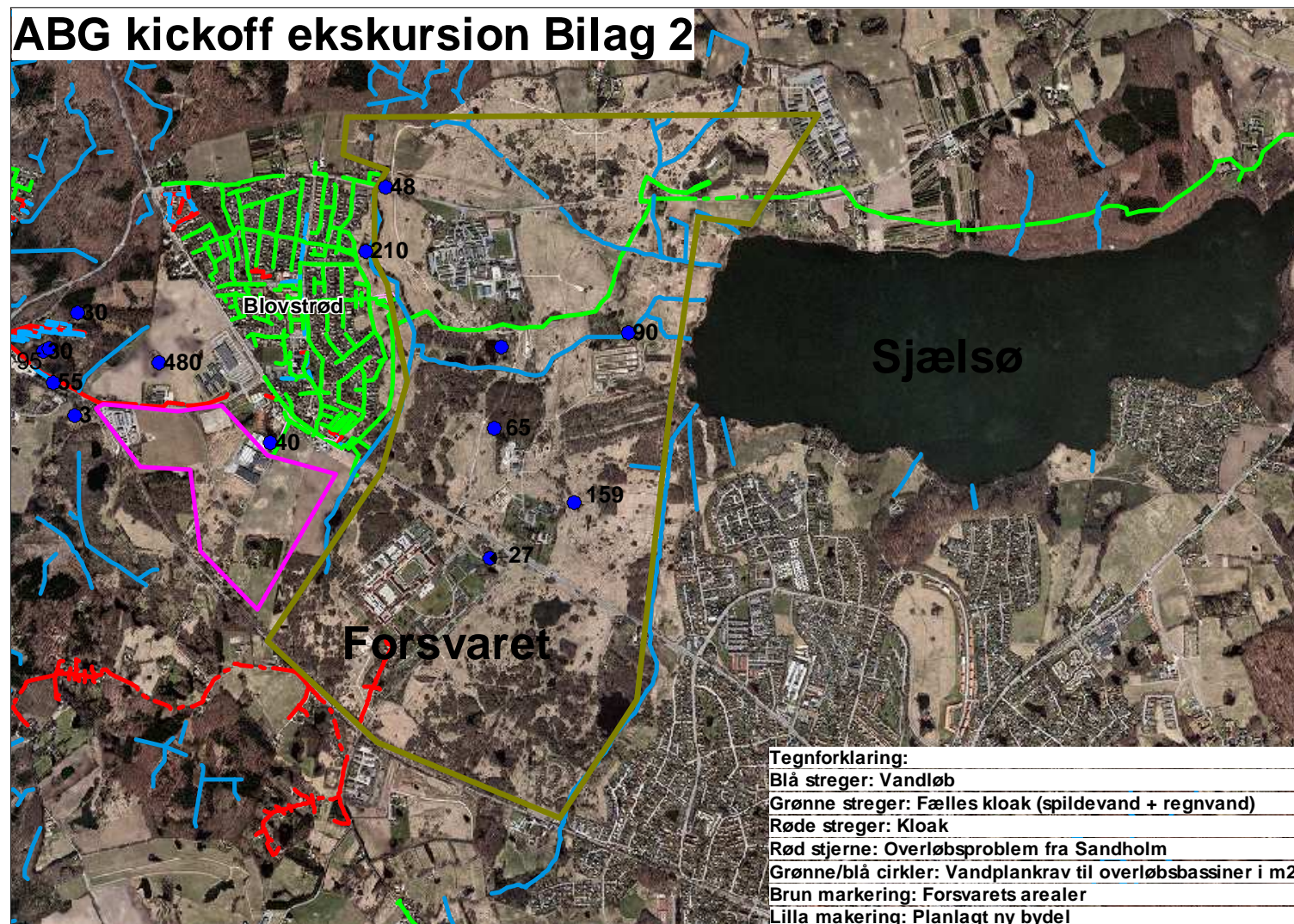


- Water Framework Directive Theoretical calculations of nutrient loads....Hmmm???...
- Information of flooding with wastewater – Sometimes.....
- Information on amounts – never.....
- Information on content – never.....
- **Higher mathematics calculation lesson:**
- Theory x sometimes + never + never = knowledge level: Nothing

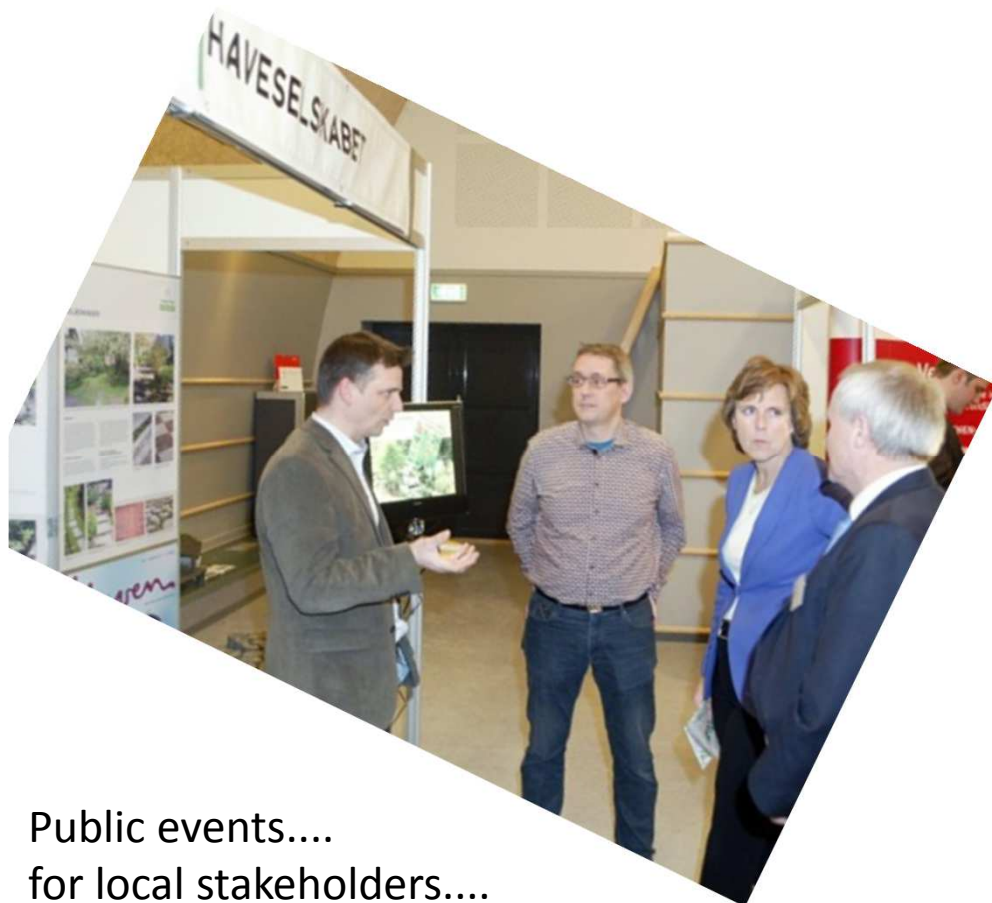
**Knowledge is essential**



**ABG kickoff ekskursion Bilag 2**



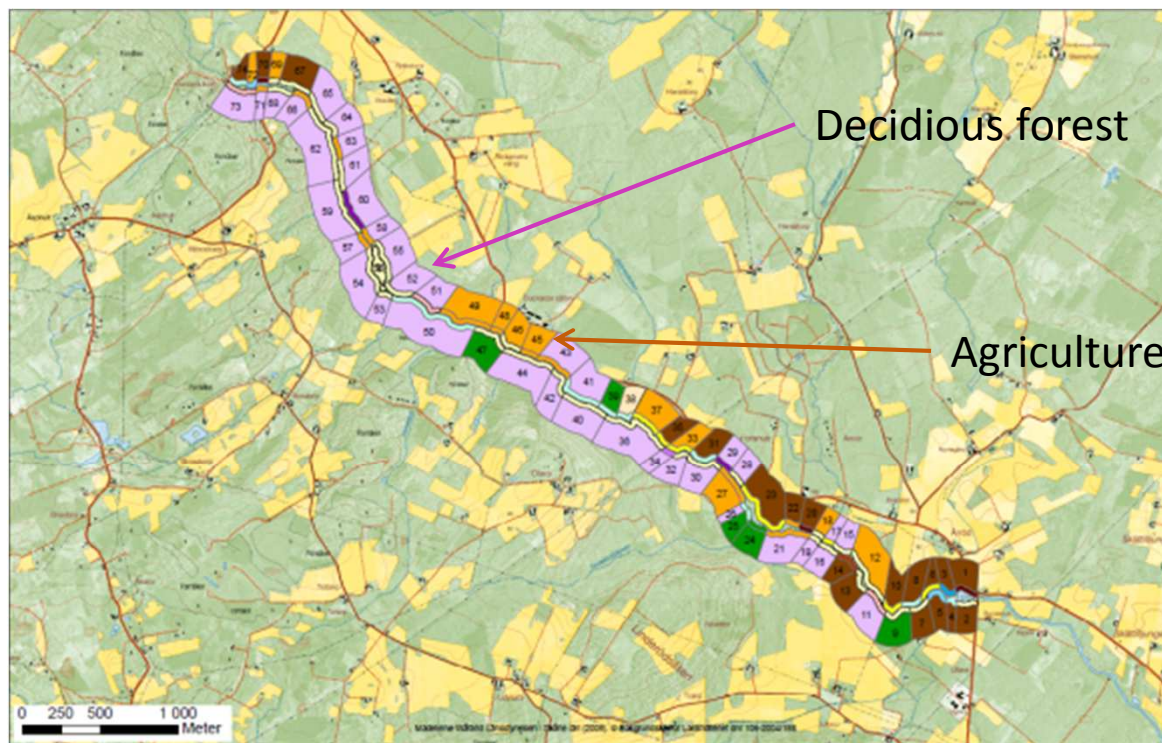




Public events....  
for local stakeholders....  
and EU Commissioner for Climate Action!



Wetlands



BILAGA 6

## STRANDBIOTOPER VID VRAMSÅN

Dominerande markanvändning (klass 3) i omgivningen och närmiljön (30 - 200 m respektive 0 - 30 m på var sida om vattendraget).

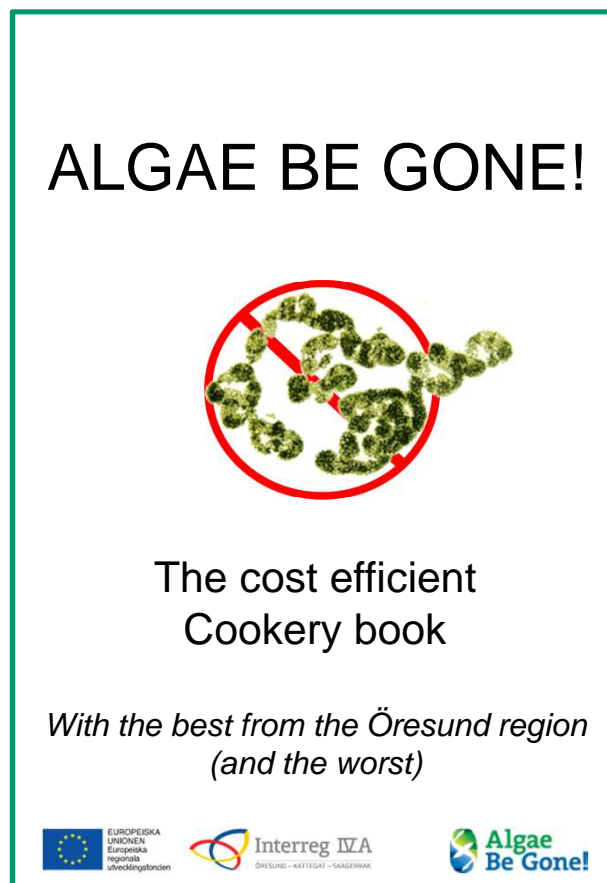
Numrering enligt protokoll B



Passive sampling

## Habitat mapping and GIS







## Further communication? Hunting and fishing exhibition



15-30.000 visitors







Further communication?



Flyers  
Postcards  
Rollups  
[www.algaebegone.eu](http://www.algaebegone.eu)

